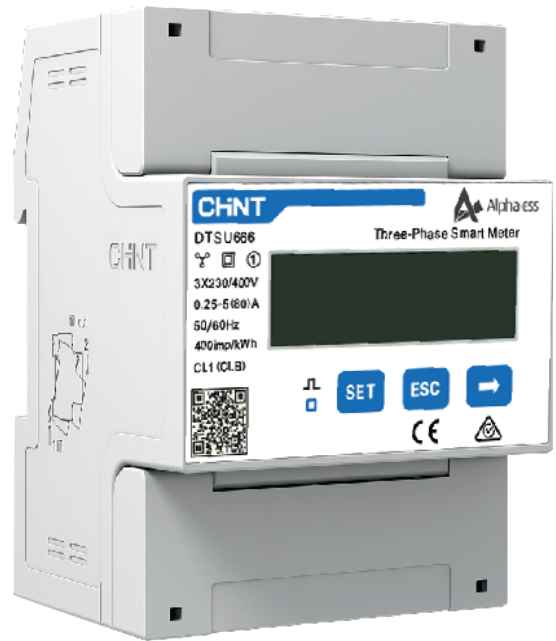


YOUR
SMART
ENERGY



DTSU666

Three Phase Smart Meter



Accuracy
Simple&Easy
Smart

DTSU666



Model	DTSU666 5(80)A
General Specification	
Dimension (W x D x H)	72 x 100 x 65.5 mm
Mounted Type	DIN35 Rail
CT Number	None
Power supply	
Power Grid Type	3P4W
Input Power	57.7 ~ 288 VAC (phase voltage)
Power Consumption	<1W
Measurement Range	
Line Voltage	100 ~ 499 VAC
Phase Voltage	57.7 ~ 288 VAC
Current	80A/5A
Measurement Accuracy	
Voltage	± 0.5%
Current	± 1%
Frequency	± 0.01Hz
Power	± 1%
Energy	± 1%
Communication	
Interface	RS485
Baud Rate	1200/2400/4800/9600 bps
Environment	
Operating Temperature	-25°C ~ 70°C
Storage Temperature	0°C ~ 40°C
Operating Humidity	<75% (non-condensing)



Headquarter: Alpha ESS Co., Ltd.

☎ +86 513 8060 6891
✉ info@alpha-ess.com
🌐 www.alpha-ess.com
📍 Jiuhua Road 888, Nantong High-Tech Industrial Development Zone, Nantong City, 226300

Alpha ESS Suzhou Co., Ltd.

☎ +86 512 6828 7609
✉ info@alpha-ess.com
🌐 www.alpha-ess.com
📍 Building 10-A, Canal Town Industrial Park, 99 Taihu E Rd, Wuzhong District, Suzhou 215000

Australia: Alpha ESS Australia Pty. Ltd.

☎ +61 402 500 520 (Sales)
+61 1300 968 933 (Technical Support)
✉ australia@alpha-ess.com
🌐 www.alpha-ess.com.au
📍 Unit 1, 2 Ralph Street Alexandria NSW 2015

Germany: Alpha ESS Europe GmbH

☎ +49 6103 4591 601
✉ europe@alpha-ess.de
🌐 www.alpha-ess.de
📍 Paul-Ehrlich-Straße 1a, D-63225 Langen, Hessen

Italy: Alpha ESS Italy S.r.l.

☎ +39 599 239 50
✉ info@alpha-ess.it
🌐 www.alpha-ess.it
📍 Via Loda,17-41013 Castelfranco Emilia (MO)

Korea: Alpha ESS Korea Co., Ltd.

☎ +82 64 721 2004
✉ korea@alpha-ess.com
📍 2F, 19-4, Nohyeong 11-gil, Jeju-si, Jeju-do, Republic of Korea

UK: Alpha ESS UK Ltd.

✉ uk@alpha-ess.com
📍 Drake House, Long Street, Dursley, gl11 4hh